

SOLAR ACCESS DIAGRAM - B305  
WINTER SOLSTICE

D	05.12.17	RE-ISSUED FOR DEVELOPMENT APPLICATION	SP	ADM
C	03.12.17	RE-ISSUED FOR DEVELOPMENT APPLICATION	SP	ADM
B	01.12.17	RE-ISSUED FOR DEVELOPMENT APPLICATION	SP	ADM
A	27.10.17	ISSUED FOR DEVELOPMENT APPLICATION	SP	ADM
ISSUE	DATE	DESCRIPTION	initials	chkd
sign		date		

These drawings are not to be scaled. Figured dimensions shall be used in all cases.

COPYRIGHT - These drawings remain the exclusive copyright of ADM Architects. Reproductions in any form whether electronic, digital or otherwise shall not be allowed except by express permission granted in writing by ADM Architects.

FIGURED DIMENSIONS - These drawings are not to be scaled. Figured dimensions shall be used in all cases.

DISCREPANCIES IN DIMENSIONS/POSITIONS/LOCATIONS/FINISHES The Contractor is to verify any dimensional, location or finish discrepancy with ADM Architects prior to any physical construction or setting out so that ADM Architects is given the opportunity to resolve potential discrepancies or conflicts in sufficient time without causing abortive work. The Contractor shall be responsible for notifying ADM Architects of any such discrepancy or conflict that may arise on site.

COORDINATION OF WORKS - These drawings are to be read in conjunction with the full set of consultant's drawings, specifications, reports and DA conditions.

NOMINATED ARCHITECT- The nominated Architects for ADM Projects (Australia) Pty Ltd T/A ADM Architects is Angelo Di Martino AIB No.7608

94 Kembla St, Wollongong NSW 2500 PO Box 3061 Wollongong  
ph: 02 4228 6400 fax: 02 4228 6455 www.admarchitects.com.au

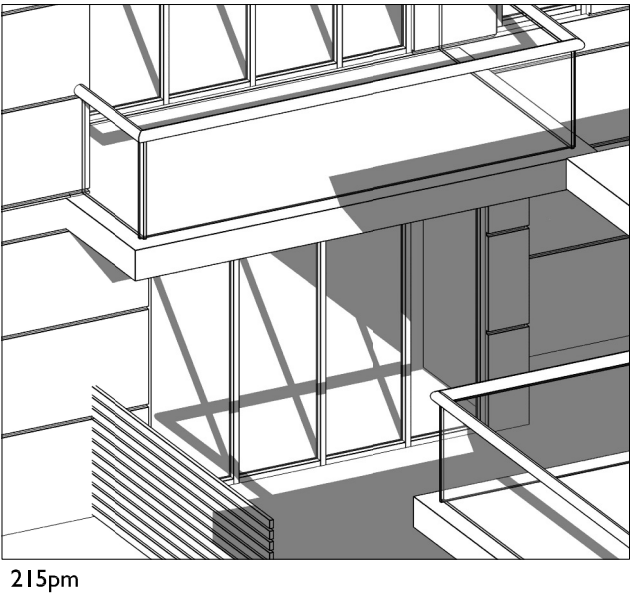
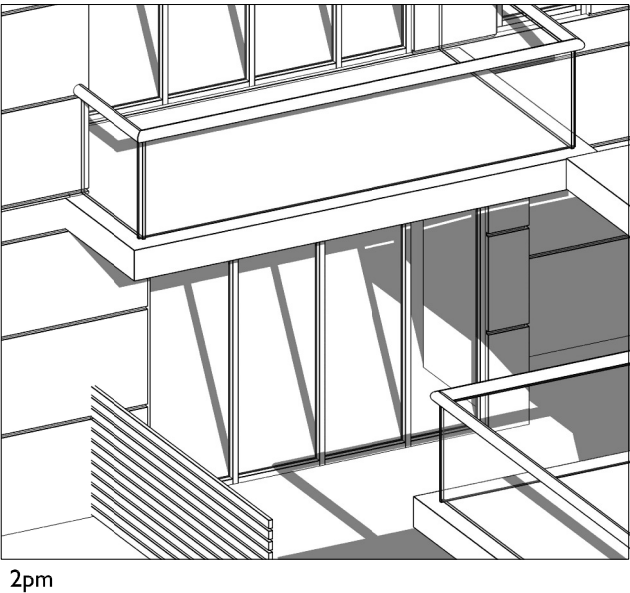
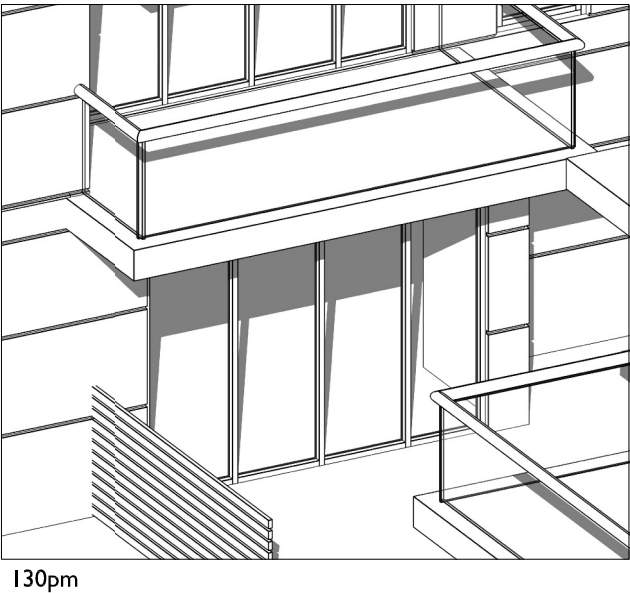
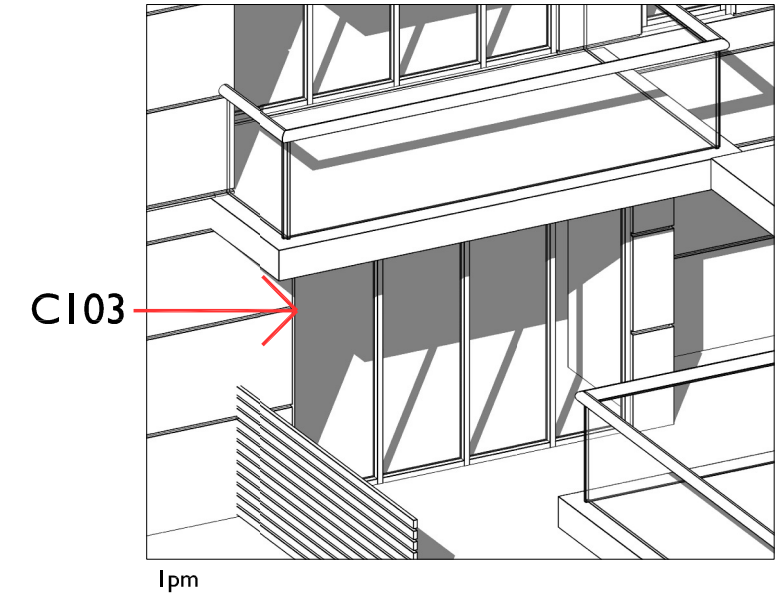
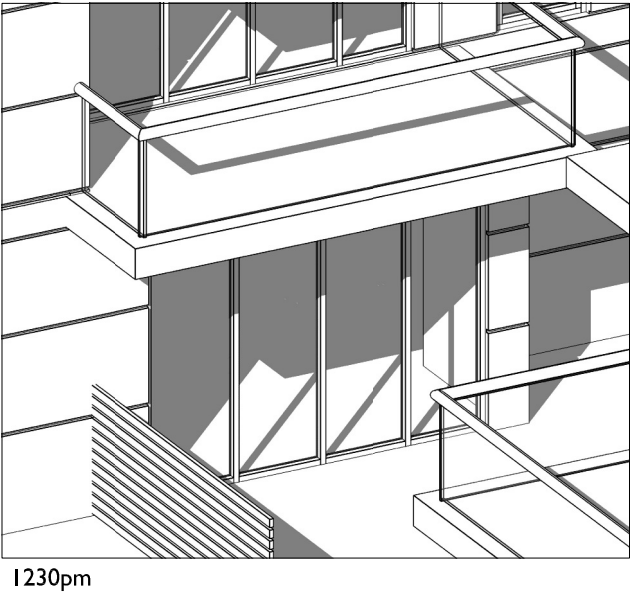
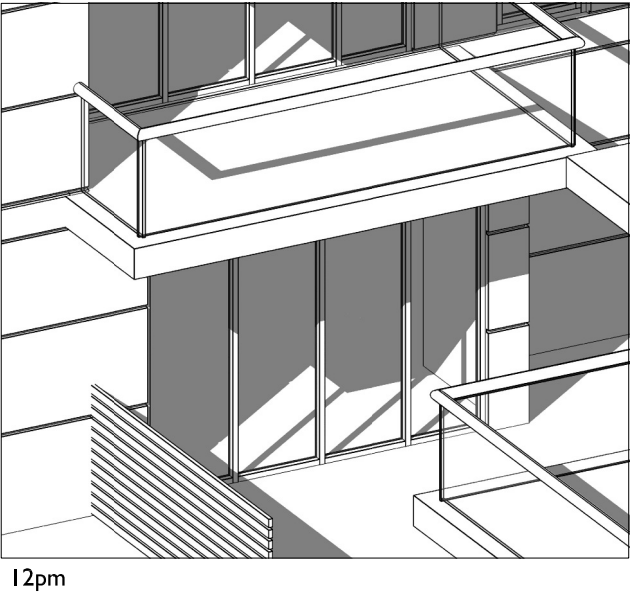
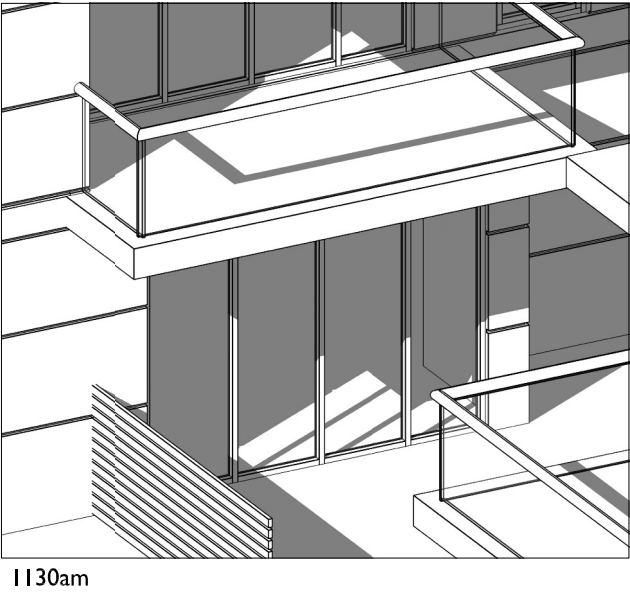
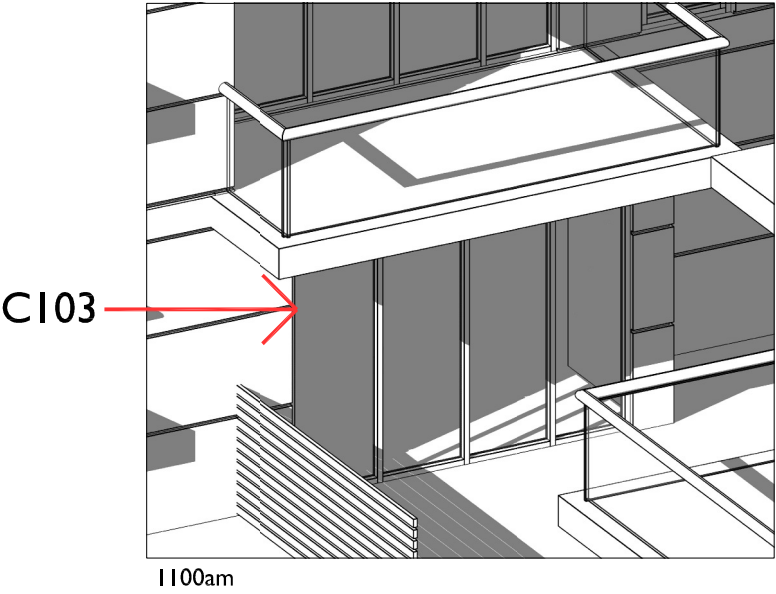
**NICOLAS  
DAOUD &  
CO PTY. Ltd**

Project  
DEMOLITION OF EXISTING STRUCTURES AND CONSTRUCTION  
OF A MIXED USE DEVELOPMENT COMPRISING RESIDENTIAL  
APARTMENTS ABOVE RETAIL SHOPS, COMMERCIAL TENANCIES  
AND ASSOCIATED CARPARKING AREAS

at  
LOT 1, DP50193, LOT 3, DPI104857, PT.1, DP506764, LOTS 100 & 200,  
DPI017091,  
AKUNA & TERRALONG STREET  
KIAMA

scale NTS  
date DECEMBER 2017  
drawn djm SJ chkd ADM  
drawing  
DEVELOPMENT APPLICATION  
SOLAR ACCESS DIAGRAM - B305  
Project No. Drawing No. issue  
2016-19(a) A-410 D

NOT FOR CONSTRUCTION



SOLAR ACCESS DIAGRAM - CI03  
WINTER SOLSTICE

C	04.12.17	RE-ISSUED FOR DEVELOPMENT APPLICATION	SP	ADM
B	01.12.17	RE-ISSUED FOR DEVELOPMENT APPLICATION	SP	ADM
A	27.10.17	ISSUED FOR DEVELOPMENT APPLICATION	SP	ADM
ISSUE	DATE	DESCRIPTION	initials	chkd
sign			date	
These drawings are not to be scaled. Figured dimensions shall be used in all cases.				

COPYRIGHT - These drawings remain the exclusive copyright of ADM Architects. Reproductions in any form whether electronic, digital or otherwise shall not be allowed except by express permission granted in writing by ADM Architects.

FIGURED DIMENSIONS - These drawings are not to be scaled. Figured dimensions shall be used in all cases.

DISCREPANCIES IN DIMENSIONS/POSITIONS/LOCATIONS/FINISHES The Contractor is to verify any dimensional, location or finish discrepancy with ADM Architects prior to any physical construction or setting out so that ADM Architects is given the opportunity to resolve potential discrepancies or conflicts in sufficient time without causing abortive work. The Contractor shall be responsible for notifying ADM Architects of any such discrepancy or conflict that may arise on site.

COORDINATION OF WORKS - These drawings are to be read in conjunction with the full set of consultant's drawings, specifications, reports and DA conditions.

NOMINATED ARCHITECT - The nominated Architect for ADM Projects (Australia) Pty Ltd T/A ADM Architects is Angelo Di Martino ARB No.7608



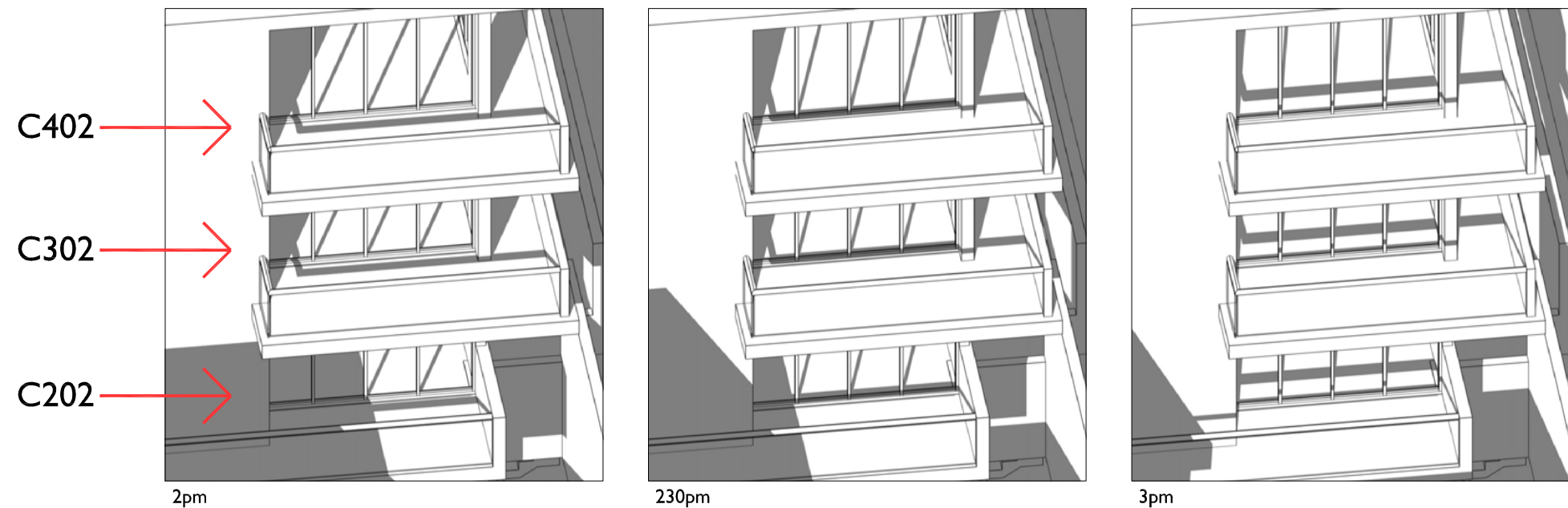
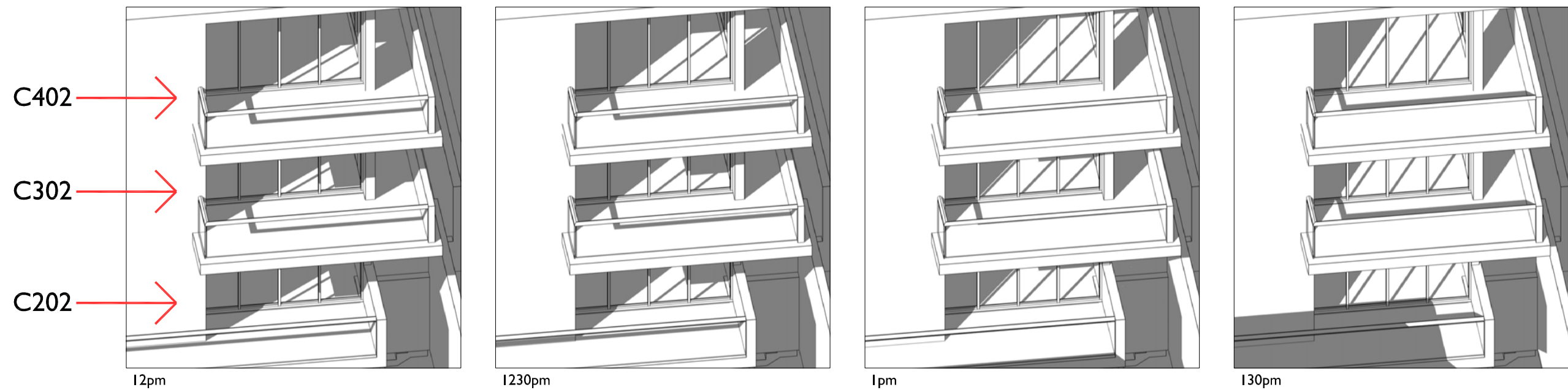
NICOLAS  
DAOUD &  
CO PTY. Ltd

Project  
DEMOLITION OF EXISTING STRUCTURES AND CONSTRUCTION  
OF A MIXED USE DEVELOPMENT COMPRISING RESIDENTIAL  
APARTMENTS ABOVE RETAIL SHOPS, COMMERCIAL TENANCIES  
AND ASSOCIATED CARPARKING AREAS  
at  
LOT 1, DP50193, LOT 3, DPI 104857, PT.1, DP506764, LOTS 100 & 200,  
DPI017091,  
AKUNA & TERRALONG STREET  
KIAMA

scale	NTS
date	DECEMBER 2017
drawn	djm SJ chkd ADM
drawing	DEVELOPMENT APPLICATION
Project No.	SOLAR ACCESS DIAGRAM - CI03
2016-19(a)	Issue
A-411	C

NOT FOR CONSTRUCTION





## SOLAR ACCESS DIAGRAM - C202, C302 & C402 WINTER SOLSTICE

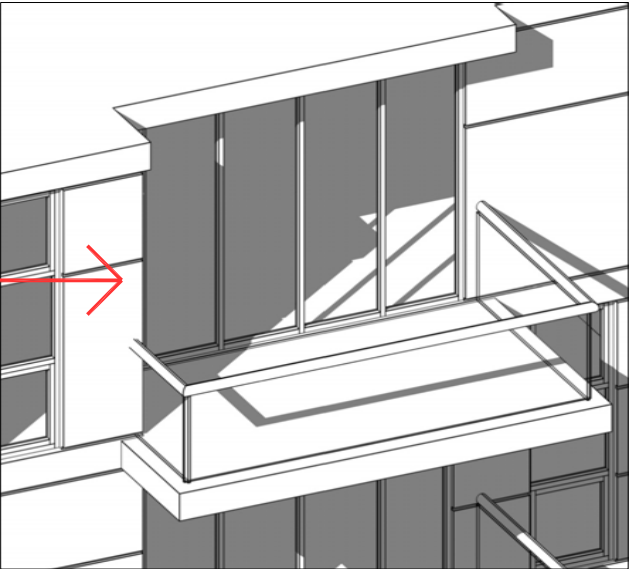
					<p>COPYRIGHT - These drawings remain the exclusive copyright of ADM Architects. Reproductions in any form whether electronic, digital or otherwise shall not be allowed except by express permission granted in writing by ADM Architects.</p> <p>FIGURED DIMENSIONS - These drawings are not to be scaled. Figured dimensions shall be used in all cases.</p> <p>DISCREPANCIES IN DIMENSIONS/POSITIONS/LOCATIONS/FINISHES The Contractor is to verify any dimensional, location or finish discrepancy with ADM Architects prior to any physical construction or setting out so that ADM Architects is given the opportunity to resolve potential discrepancies or conflicts in sufficient time without causing abortive work. The Contractor shall be responsible for notifying ADM Architects of any such discrepancy or conflict that may arise on site.</p> <p>COORDINATION OF WORKS - These drawings are to be read in conjunction with the full set of consultant's drawings, specifications, reports and DA conditions.</p> <p>NOMINATED ARCHITECT- The nominated Architects for ADM Projects (Australia) Pty Ltd T/as ADM Architects is Angelo Di Martino ARB No.7608</p> <p>94 Kembla St, Wollongong NSW 2500 PO Box 3581 Wollongong ph: 02 4228 6400 fax: 02 4228 6455 www.admarchitects.com.au</p>					<p>NICOLAS DAOUD &amp; CO PTY. Ltd</p>					<p>Project DEMOLITION OF EXISTING STRUCTURES AND CONSTRUCTION OF A MIXED USE DEVELOPMENT COMPRISING RESIDENTIAL APARTMENTS ABOVE RETAIL SHOPS, COMMERCIAL TENANCIES AND ASSOCIATED CARPARKING AREAS</p> <p>at LOT 1, DP50193, LOT 3, DPI 104857, PT.1, DP506764, LOTS 100 &amp; 200, DPI017091, AKUNA &amp; TERRALONG STREET KIAMA</p>					<p>scale NTS</p> <p>date DECEMBER 2017</p> <p>drawn djm SJ chkd ADM</p> <p>drawing</p> <p>DEVELOPMENT APPLICATION</p> <p>SOLAR ACCESS DIAGRAM - C202, C302 &amp; C402</p> <p>Project No. Drawing No. Issue</p> <p>2016-19(a) A-412 C</p>				
C	04.12.17	RE-ISSUED FOR DEVELOPMENT APPLICATION	SP	ADM																				
B	01.12.17	RE-ISSUED FOR DEVELOPMENT APPLICATION	SP	ADM																				
A	27.10.17	ISSUED FOR DEVELOPMENT APPLICATION	SP	ADM																				
ISSUE	DATE	DESCRIPTION		initials	chkd																			
sign					date																			
These drawings are not to be scaled. Figured dimensions shall be used in all cases.																								

sign date

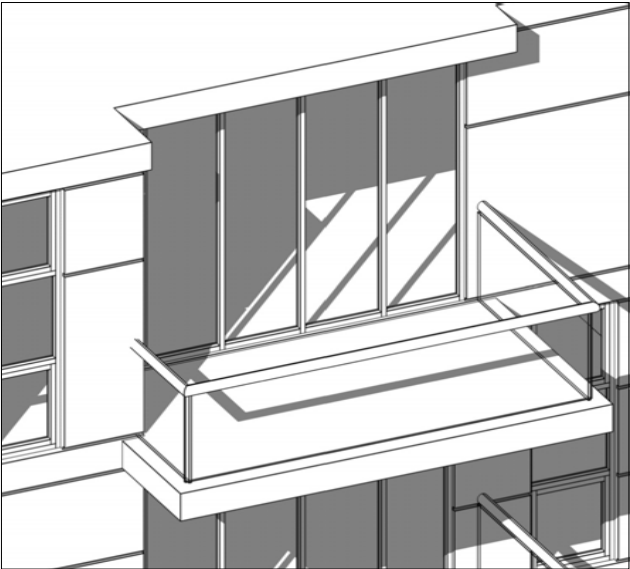
These drawings are not to be scaled. Figured dimensions shall be used in all cases.

NOT FOR CONSTRUCTION

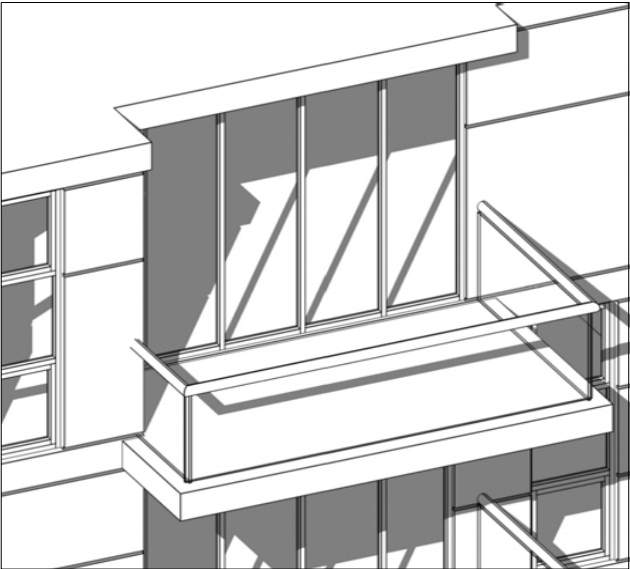
C305 →



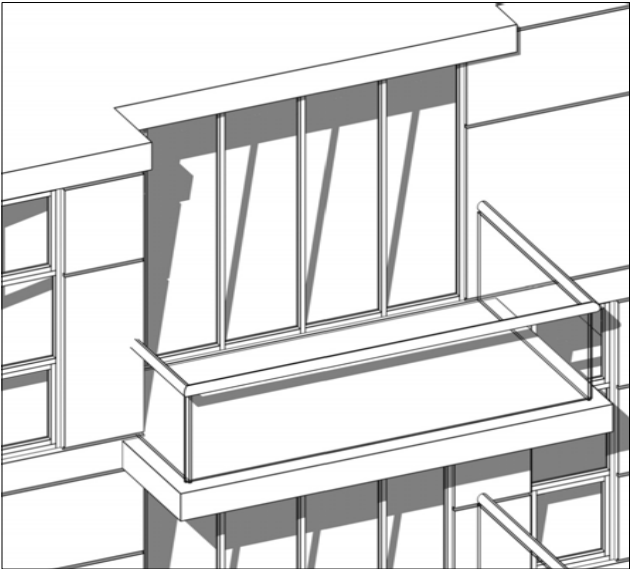
12pm



1230pm

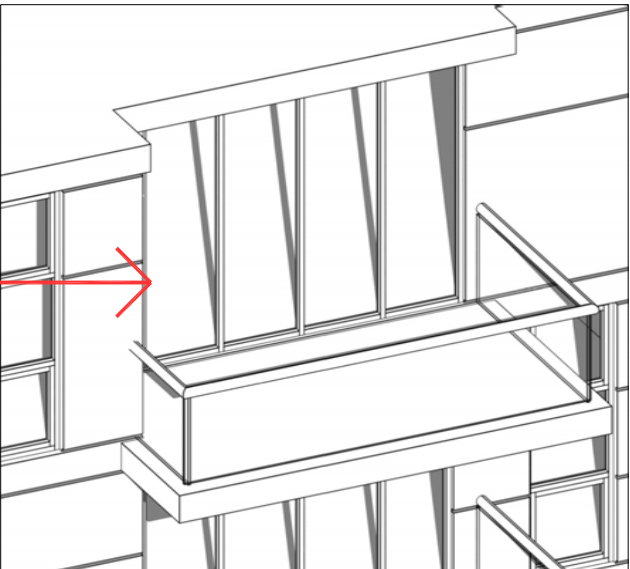


1pm

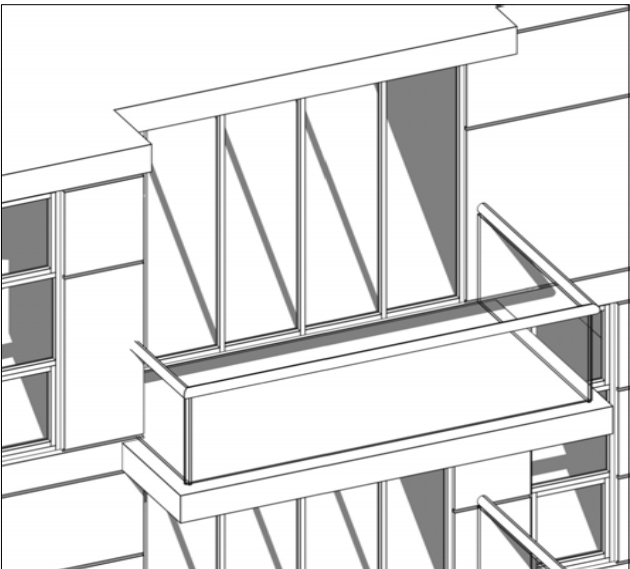


130pm

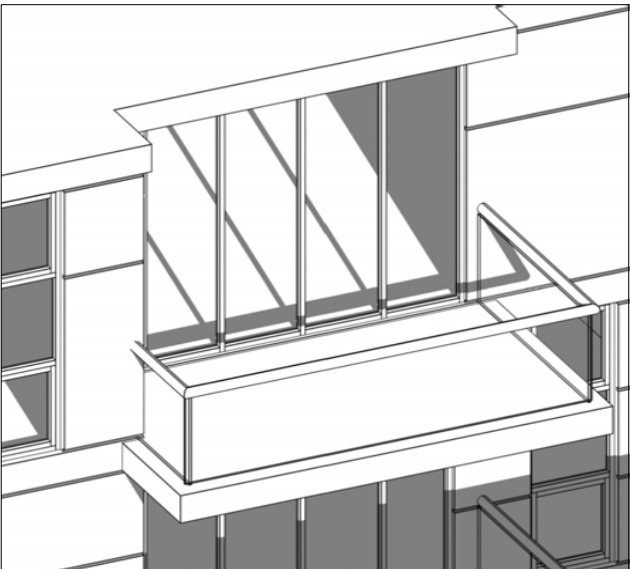
C305 →



2pm



230pm



3pm

SOLAR ACCESS DIAGRAM - C305  
WINTER SOLSTICE

D	04.12.17	RE-ISSUED FOR DEVELOPMENT APPLICATION	SP	ADM
C	03.12.17	RE-ISSUED FOR DEVELOPMENT APPLICATION	SP	ADM
B	01.12.17	RE-ISSUED FOR DEVELOPMENT APPLICATION	SP	ADM
A	27.10.17	ISSUED FOR DEVELOPMENT APPLICATION	SP	ADM
ISSUE	DATE	DESCRIPTION	initials	chkd
sign			date	
These drawings are not to be scaled. Figured dimensions shall be used in all cases.				

COPYRIGHT - These drawings remain the exclusive copyright of ADM Architects. Reproductions in any form whether electronic, digital or otherwise shall not be allowed except by express permission granted in writing by ADM Architects.

FIGURED DIMENSIONS - These drawings are not to be scaled. Figured dimensions shall be used in all cases.

DISCREPANCIES IN DIMENSIONS/POSITIONS/LOCATIONS/FINISHES The Contractor is to verify any dimensional, location or finish discrepancy with ADM Architects prior to any physical construction or setting out so that ADM Architects is given the opportunity to resolve potential discrepancies or conflicts in sufficient time without causing abortive work. The Contractor shall be responsible for notifying ADM Architects of any such discrepancy or conflict that may arise on site.

COORDINATION OF WORKS - These drawings are to be read in conjunction with the full set of consultant's drawings, specifications, reports and DA conditions.

NOMINATED ARCHITECT - The nominated Architect for ADM Projects (Australia) Pty Ltd T/A ADM Architects is Angelo Di Martino ARB No.7608



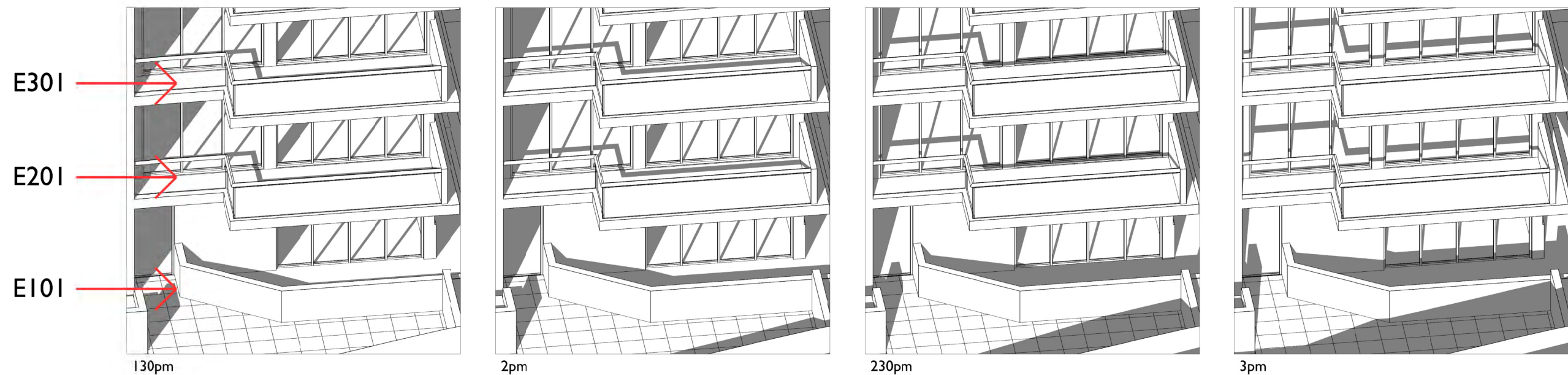
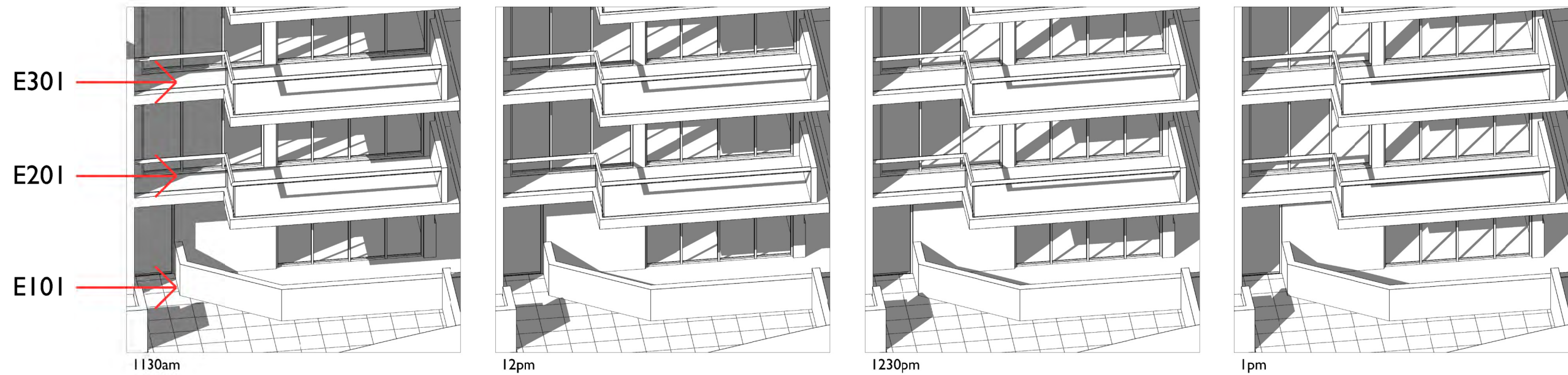
NICOLAS  
DAOUD &  
CO PTY. Ltd

Project  
DEMOLITION OF EXISTING STRUCTURES AND CONSTRUCTION  
OF A MIXED USE DEVELOPMENT COMPRISING RESIDENTIAL  
APARTMENTS ABOVE RETAIL SHOPS, COMMERCIAL TENANCIES  
AND ASSOCIATED CARPARKING AREAS  
at  
LOT 1, DP50193, LOT 3, DPI 104857, PT.1, DP506764, LOTS 100 & 200,  
DPI017091,  
AKUNA & TERRALONG STREET  
KIAMA

scale	NTS
date	DECEMBER 2017
drawn	djm SJ chkd ADM
drawing	DEVELOPMENT APPLICATION
Project No.	SOLAR ACCESS DIAGRAM - C305
2016-19(a)	Issue
A-413	D

NOT FOR CONSTRUCTION





## SOLAR ACCESS DIAGRAM - E101, 201 & 301 WINTER SOLSTICE

ISSUE	DATE	DESCRIPTION	INITIALS	CHKD
D	04.12.17	RE-ISSUED FOR DEVELOPMENT APPLICATION	SP	ADM
C	03.12.17	RE-ISSUED FOR DEVELOPMENT APPLICATION	SP	ADM
B	01.12.17	RE-ISSUED FOR DEVELOPMENT APPLICATION	SP	ADM
A	27.10.17	ISSUED FOR DEVELOPMENT APPLICATION	SP	ADM

sign \_\_\_\_\_ date \_\_\_\_\_

These drawings are not to be scaled. Figured dimensions shall be used in all cases.

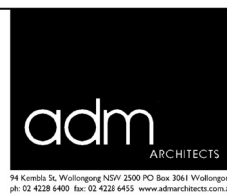
COPYRIGHT - These drawings remain the exclusive copyright of ADM Architects. Reproductions in any form whether electronic, digital or otherwise shall not be allowed except by express permission granted in writing by ADM Architects.

FIGURED DIMENSIONS - These drawings are not to be scaled. Figured dimensions shall be used in all cases.

DISCREPANCIES IN DIMENSIONS/POSITIONS/LOCATIONS/FINISHES The Contractor is to verify any dimensional, location or finish discrepancy with ADM Architects prior to any physical construction or setting out so that ADM Architects is given the opportunity to resolve potential discrepancies or conflicts in sufficient time without causing abortive work. The Contractor shall be responsible for notifying ADM Architects of any such discrepancy or conflict that may arise on site.

COORDINATION OF WORKS - These drawings are to be read in conjunction with the full set of consultant's drawings, specifications, reports and DA conditions.

NOMINATED ARCHITECT - The nominated Architect for ADM Projects (Australia) Pty Ltd T/A ADM Architects is Angelo Di Martino AIB No.7608

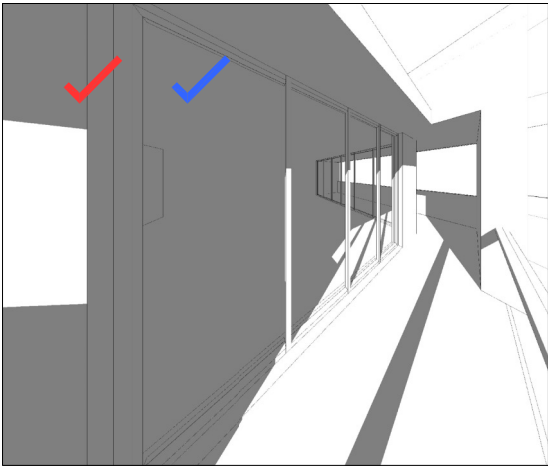


**NICOLAS  
DAOUD &  
CO PTY. Ltd**

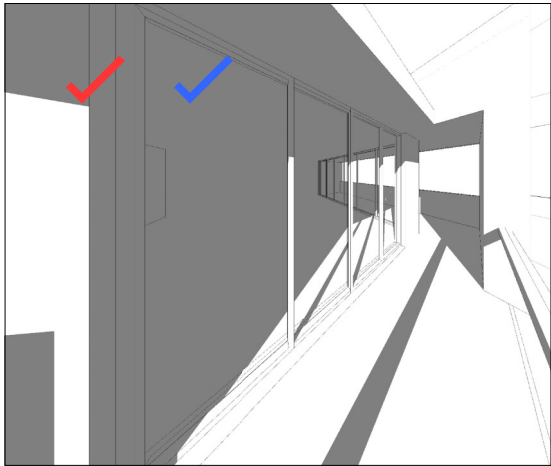
Project  
DEMOLITION OF EXISTING STRUCTURES AND CONSTRUCTION  
OF A MIXED USE DEVELOPMENT COMPRISING RESIDENTIAL  
APARTMENTS ABOVE RETAIL SHOPS, COMMERCIAL TENANCIES  
AND ASSOCIATED CARPARKING AREAS  
at  
LOT 1, DP50193, LOT 3, DPI I04857, PT.1, DP506764, LOTS 100 & 200,  
DPI017091,  
AKUNA & TERRALONG STREET  
KIAMA

scale	NTS
date	DECEMBER 2017
drawn	djm SJ chkd ADM
drawing	DEVELOPMENT APPLICATION
Project No.	SOLAR ACCESS DIAGRAM - E301, 201 & 301
2016-19(a)	Draw No. A-414 issue D

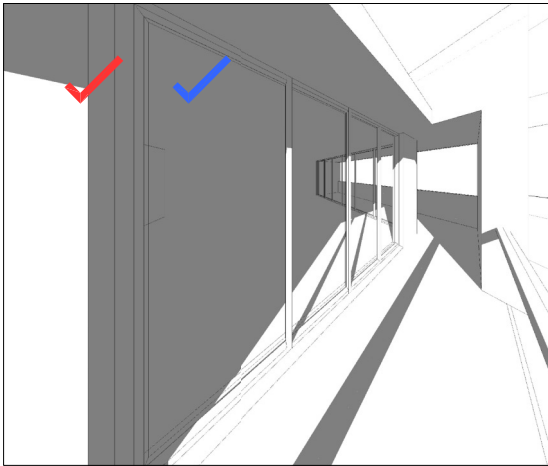
NOT FOR CONSTRUCTION



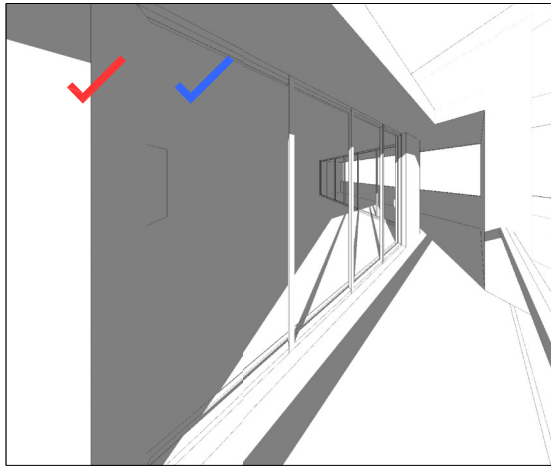
1100am



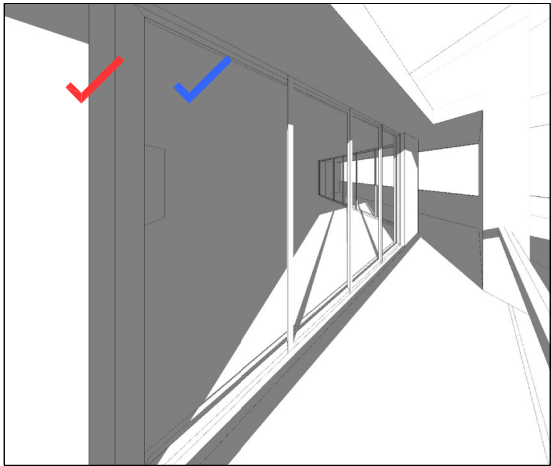
1115am



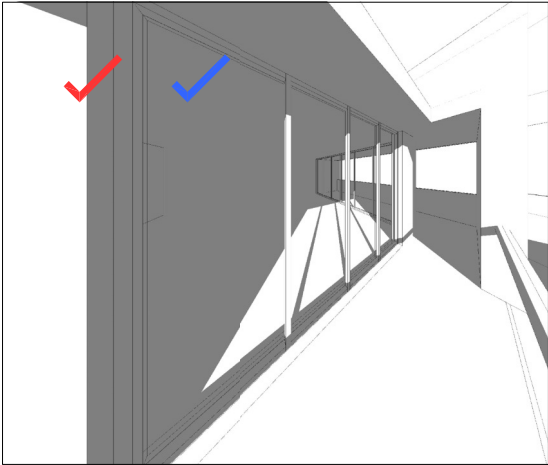
1130pm



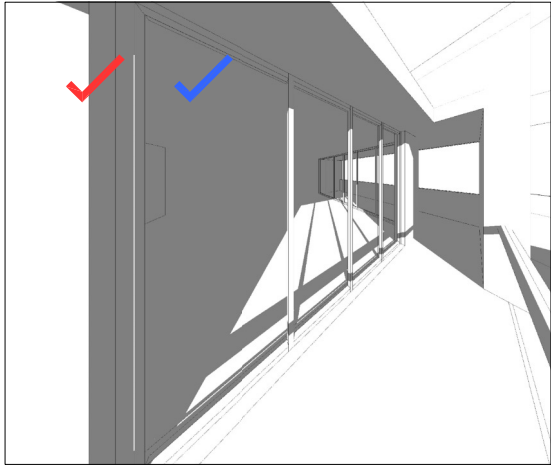
12pm



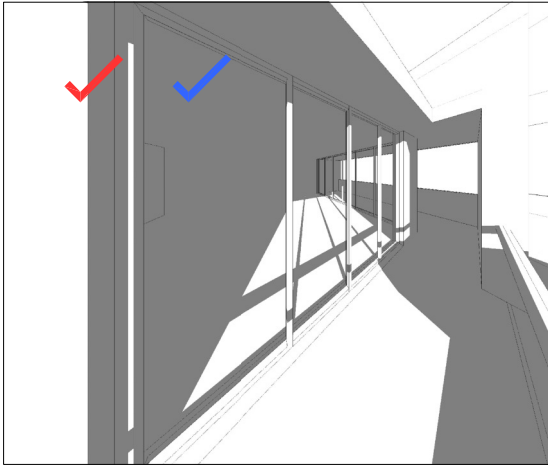
1230pm



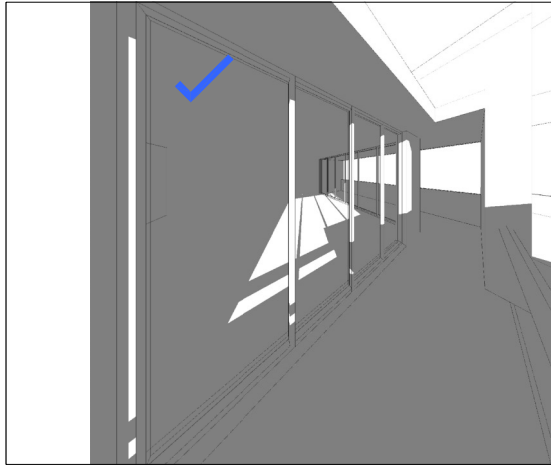
1pm



130pm



2pm



215pm

SOLAR ACCESS - A307  
WINTER SOLSTICE



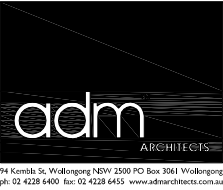
BALCONY 3hrs



LIVING 3hrs 15mins

C	04.12.17	RE-ISSUED FOR DEVELOPMENT APPLICATION	SP	ADM
B	02.12.17	RE-ISSUED FOR DEVELOPMENT APPLICATION	SP	ADM
A	02.12.17	ISSUED FOR DEVELOPMENT APPLICATION	SP	ADM
ISSUE	DATE	DESCRIPTION	initials	chkd
sign			date	
These drawings are not to be scaled. Figured dimensions shall be used in all cases.				

COPYRIGHT - These drawings remain the exclusive copyright of ADM Architects. Reproductions in any form whether electronic, digital or otherwise shall not be allowed except by express permission granted in writing by ADM Architects.  
FIGURED DIMENSIONS - These drawings are not to be scaled. Figured dimensions shall be used in all cases.  
DISCREPANCIES IN DIMENSIONS/POSITIONS/LOCATIONS/FINISHES The Contractor is to verify any dimensional, location or finish discrepancy with ADM Architects prior to any physical construction or setting out so that ADM Architects is given the opportunity to resolve potential discrepancies or conflicts in sufficient time without causing abortive work. The Contractor shall be responsible for notifying ADM Architects of any such discrepancy or conflict that may arise on site.  
COORDINATION OF WORKS - These drawings are to be read in conjunction with the full set of consultant's drawings, specifications, reports and DA conditions.  
NOMINATED ARCHITECT - The nominated Architect for ADM Projects (Australia) Pty Ltd T/A ADM Architects is Angelo Di Martino AIB No.7408

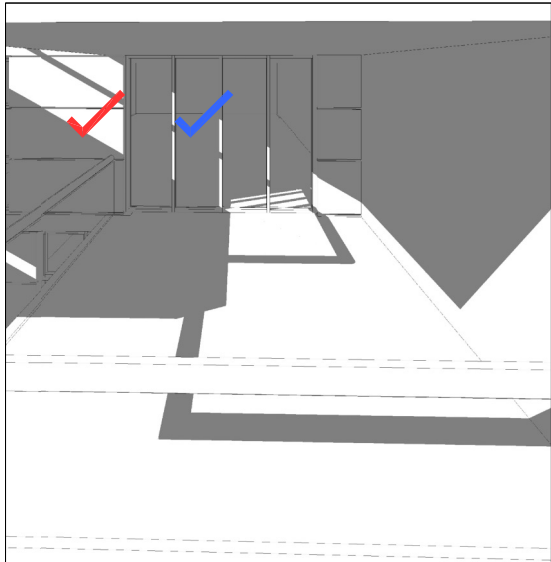


NICOLAS  
DAOUD &  
CO PTY. Ltd

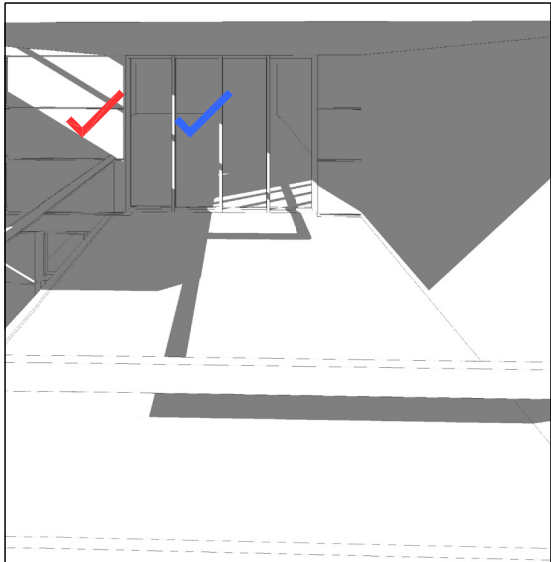
Project  
DEMOLITION OF EXISTING STRUCTURES AND CONSTRUCTION  
OF A MIXED USE DEVELOPMENT COMPRISING RESIDENTIAL  
APARTMENTS ABOVE RETAIL SHOPS, COMMERCIAL TENANCIES  
AND ASSOCIATED CARPARKING AREAS  
at  
LOT 1, DP50193, LOT 3, DPI I04857, PT.1, DP506764, LOTS 100 & 200,  
DPI017091,  
AKUNA & TERRALONG STREET  
KIAMA

scale	NTS			
date	DECEMBER 2017			
drawn	djm	SJ	chkd	ADM
drawing	DEVELOPMENT APPLICATION			
SOLAR ACCESS - A307				
Project No.	Drawing No.		Issue	
2016-19(a)	A-415		C	

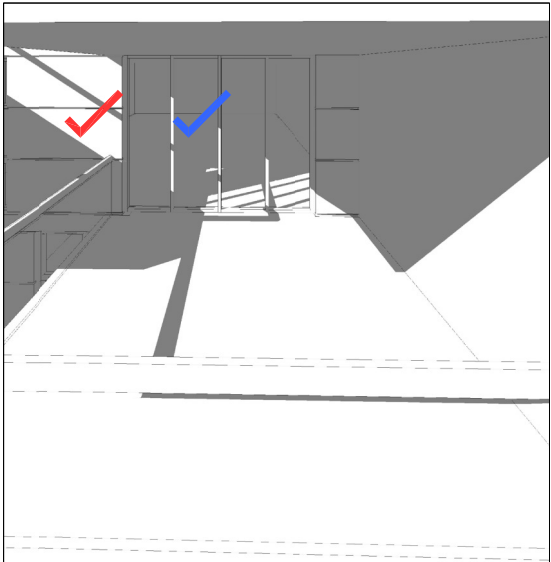
NOT FOR CONSTRUCTION



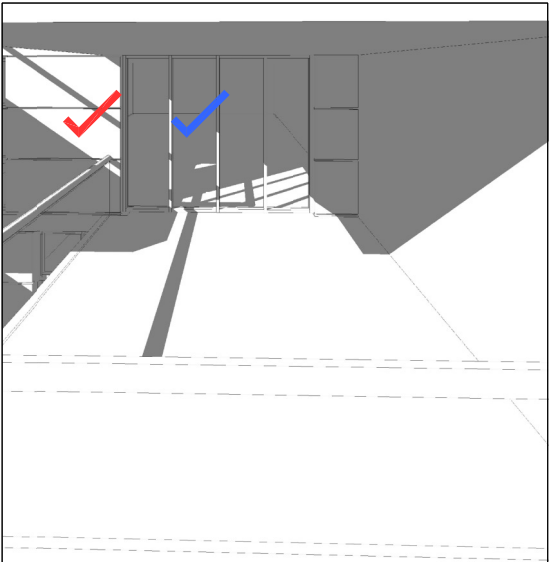
1030am



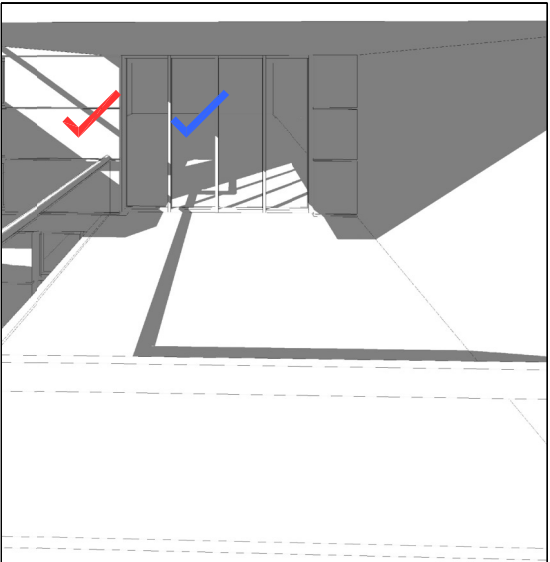
1045am



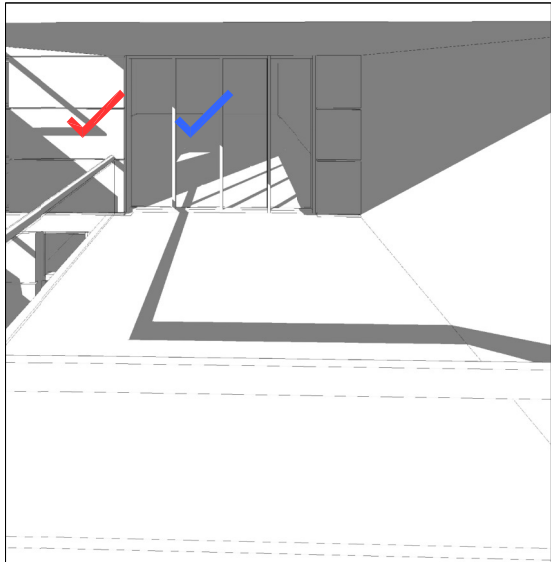
1100am



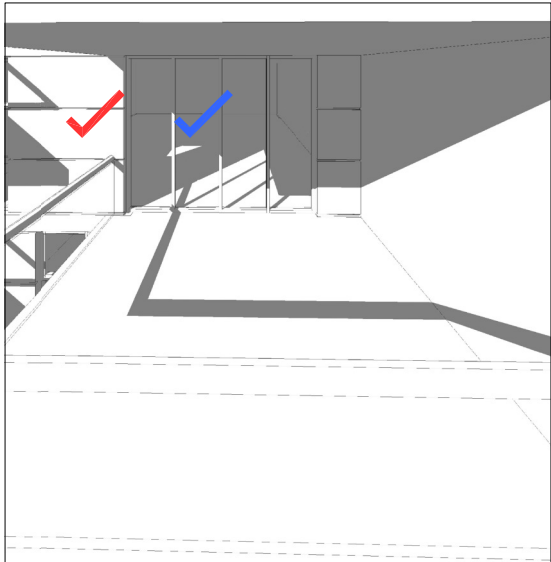
1115am



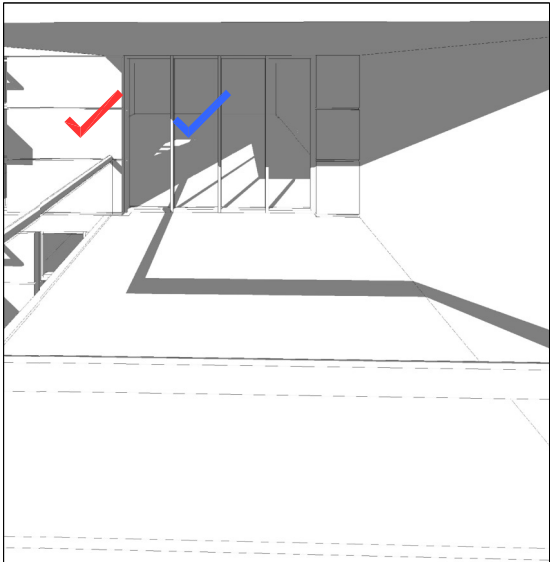
1130pm



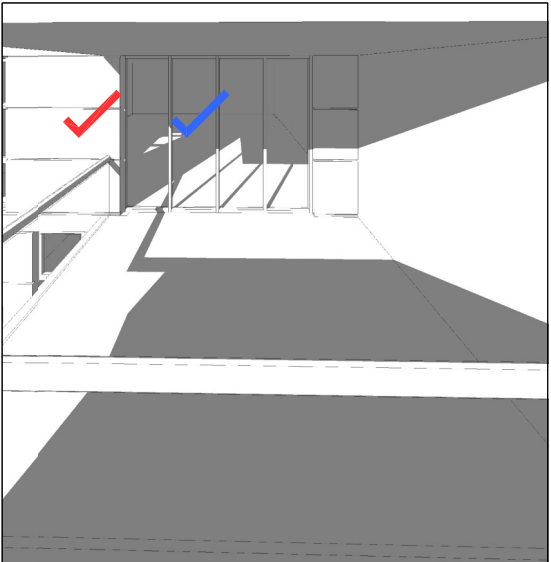
12pm



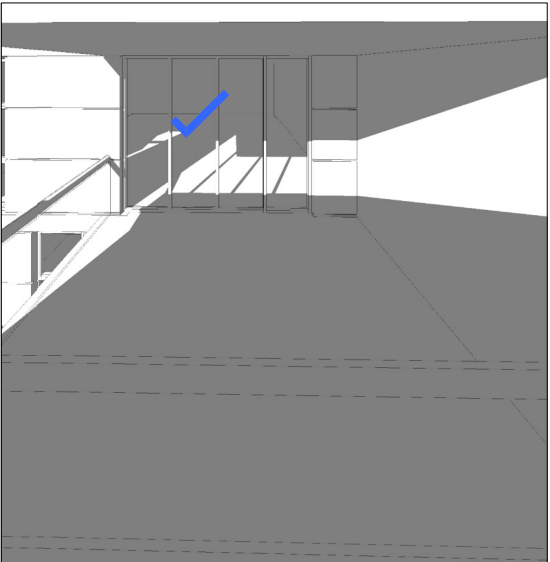
1230pm



1pm





130pm



145pm

SOLAR ACCESS - B203  
WINTER SOLSTICE

- 

BALCONY3hrs
- 

LIVING3hrs 15min

B	04.12.17	RE-ISSUED FOR DEVELOPMENT APPLICATION	SP	ADM
A	03.12.17	ISSUED FOR DEVELOPMENT APPLICATION	SP	ADM
ISSUE	DATE	DESCRIPTION	initials	chkd
sign			date	
These drawings are not to be scaled. Figured dimensions shall be used in all cases.				

COPYRIGHT - These drawings remain the exclusive copyright of ADM Architects. Reproductions in any form whether electronic, digital or otherwise shall not be allowed except by express permission granted in writing by ADM Architects.

FIGURED DIMENSIONS - These drawings are not to be scaled. Figured dimensions shall be used in all cases.

DISCREPANCIES IN DIMENSIONS/POSITIONS/LOCATIONS/FINISHES The Contractor is to verify any dimensional, location or finish discrepancy with ADM Architects prior to any physical construction or setting out so that ADM Architects is given the opportunity to resolve potential discrepancies or conflicts in sufficient time without causing abortive work. The Contractor shall be responsible for notifying ADM Architects of any such discrepancy or conflict that may arise on site.

COORDINATION OF WORKS - These drawings are to be read in conjunction with the full set of consultant's drawings, specifications, reports and DA conditions.

NOMINATED ARCHITECT- The nominated Architects for ADM Projects (Australia) Pty Ltd T/A ADM Architects is Angelo Di Martino A/B No.7608



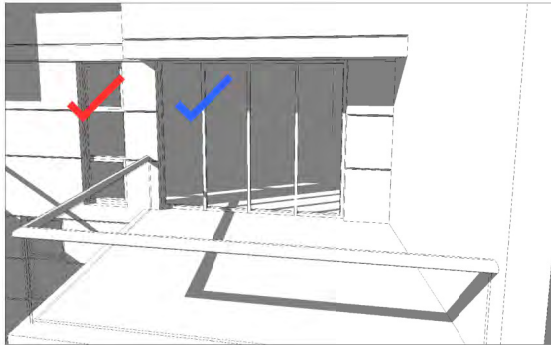
NICOLAS  
DAOUD &  
CO PTY. Ltd

Project  
DEMOLITION OF EXISTING STRUCTURES AND CONSTRUCTION  
OF A MIXED USE DEVELOPMENT COMPRISING RESIDENTIAL  
APARTMENTS ABOVE RETAIL SHOPS, COMMERCIAL TENANCIES  
AND ASSOCIATED CARPARKING AREAS  
at  
LOT 1, DP50193, LOT 3, DPI I04857, PT.1, DP506764, LOTS 100 & 200,  
DPI017091,  
AKUNA & TERRALONG STREET  
KIAMA

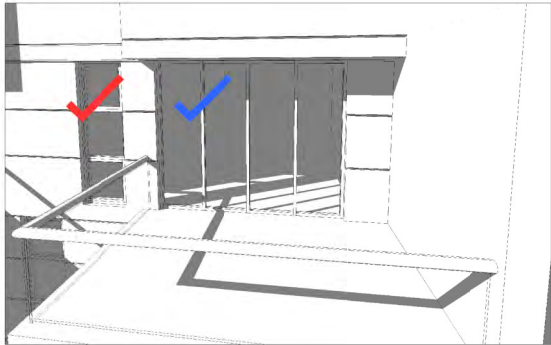
scale	NTS
date	DECEMBER 2017
drawn	djm SJ chkd ADM
drawing	DEVELOPMENT APPLICATION
Project No.	SOLAR ACCESS - B203
2016-19(a)	Drawng No. A-416
	Issue B

NOT FOR CONSTRUCTION

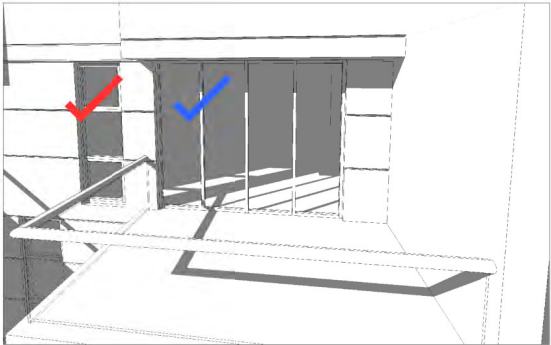




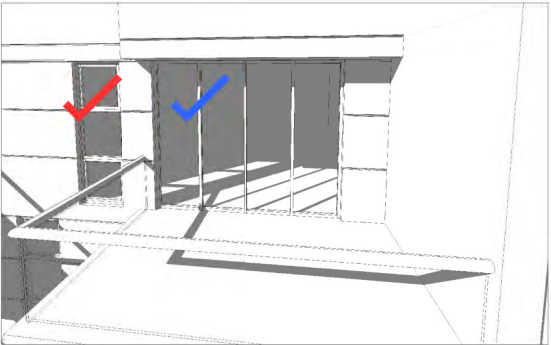
1100am



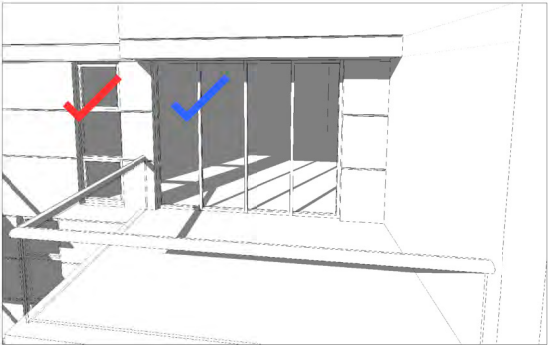
1130am



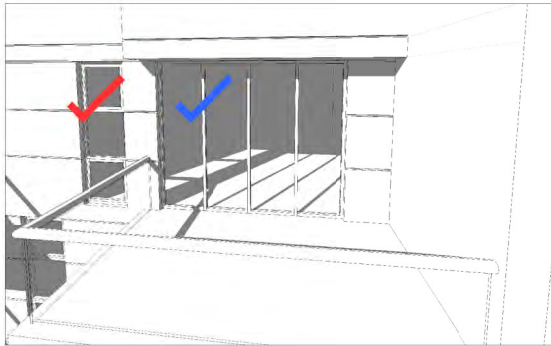
12pm



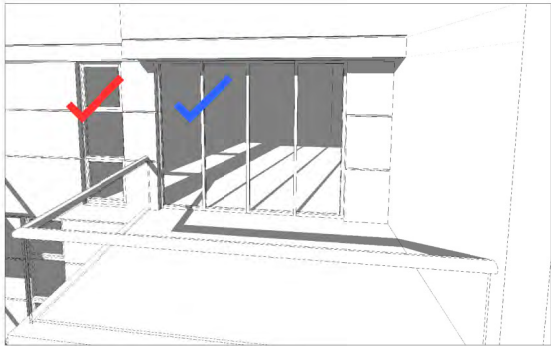
1230pm



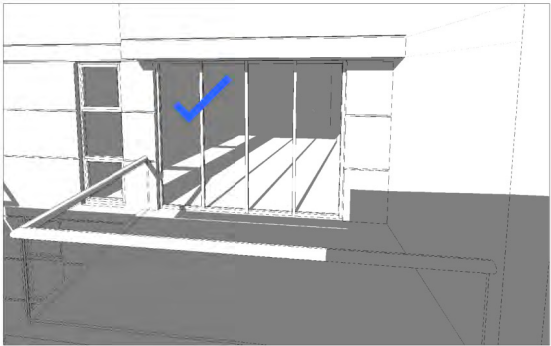
1pm



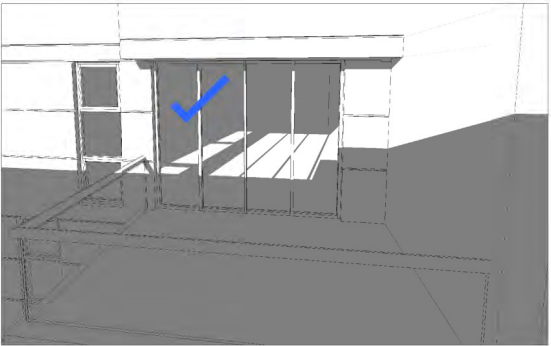
130pm



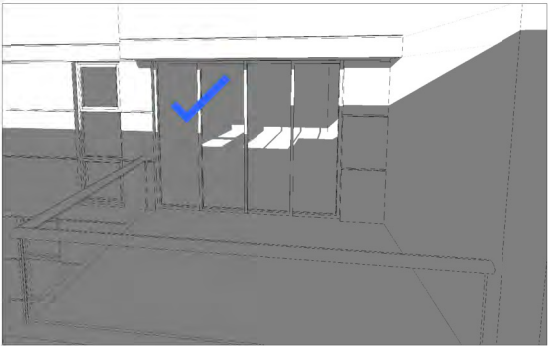
2pm



230pm



245pm



3pm

## SOLAR ACCESS - B303 WINTER SOLSTICE



BALCONY 3hrs



LIVING 4hrs

B	05.12.17	RE-ISSUED FOR DEVELOPMENT APPLICATION	SP	ADM
A	03.12.17	ISSUED FOR DEVELOPMENT APPLICATION	SP	ADM
ISSUE	DATE	DESCRIPTION	initials	chkd
sign			date	
These drawings are not to be scaled. Figured dimensions shall be used in all cases.				

COPYRIGHT - These drawings remain the exclusive copyright of ADM Architects. Reproductions in any form whether electronic, digital or otherwise shall not be allowed except by express permission granted in writing by ADM Architects.

FIGURED DIMENSIONS - These drawings are not to be scaled. Figured dimensions shall be used in all cases.

DISCREPANCIES IN DIMENSIONS/POSITIONS/LOCATIONS/FINISHES The Contractor is to verify any dimensional, location or finish discrepancy with ADM Architects prior to any physical construction or setting out so that ADM Architects is given the opportunity to resolve potential discrepancies or conflicts in sufficient time without causing abortive work. The Contractor shall be responsible for notifying ADM Architects of any such discrepancy or conflict that may arise on site.

COORDINATION OF WORKS - These drawings are to be read in conjunction with the full set of consultant's drawings, specifications, reports and DA conditions.

NOMINATED ARCHITECT - The nominated Architect for ADM Projects (Australia) Pty Ltd T/A ADM Architects is Angelo Di Martino AIB No.7608



NICOLAS  
DAOUD &  
CO PTY. Ltd

Project  
DEMOLITION OF EXISTING STRUCTURES AND CONSTRUCTION  
OF A MIXED USE DEVELOPMENT COMPRISING RESIDENTIAL  
APARTMENTS ABOVE RETAIL SHOPS, COMMERCIAL TENANCIES  
AND ASSOCIATED CARPARKING AREAS  
at  
LOT 1, DP50193, LOT 3, DPI I04857, PT.1, DP506764, LOTS 100 & 200,  
DPI017091,  
AKUNA & TERRALONG STREET  
KIAMA

scale	NTS
date	DECEMBER 2017
drawn	djm SJ chkd ADM
drawing	DEVELOPMENT APPLICATION
SOLAR ACCESS - B303	
Project No.	Drawing No.
2016-19(a)	A-417
issue	B

NOT FOR CONSTRUCTION